



CONNECTED FOREST™

Chemical Application Manager

CHEMICAL APPLICATION MANAGEMENT MADE EASY

The Chemical Application Manager (CAM) is a Software as a service (SaaS) solution that includes a mobile app designed to plan, track and manage chemical activities within the forestry industry. CAM includes tools to input and maintain spatial data, manage active ingredients and costs, capture field data, and share information to internal and public stakeholders.

PLAN, TRACK AND MANAGE CHEMICAL ACTIVITY

A dashboard interface allows managers to plan an application, assign it to a contractor, communicate with the public and regulatory agencies and track the progress. The solution is designed to eliminate the amount of calls, emails and communication previously required. CAM leverages Esri technology to provide a web-based mapping interface that is accessible on mobile and desktop for geographically defining and planning a chemical application and recording actual work performed. Companies who apply chemicals are responsible for navigating a complex regulatory environment including record-keeping, public notifications, comment periods, approval processes, and re-entry

interval-related issues. CAM streamlines this process, provides dashboards for improved visibility, and communication mechanisms for feedback, reporting and record-keeping.

CAM has three components: a web portal, a mobile application, and a web-map interface.

WEB PORTAL

The CAM web portal allows managers to plan and manage application activities and costs, assign activities to application crews and share information to specific audiences via the dashboard, such as job progress, hot zones, and re-entry dates.

MOBILE APPLICATION

The mobile app (compatible with Apple and Android devices) allows contractors and employees to access and manage the workflow from the field. The app is used to capture information and observations, weather, active ingredients, and work progress. Data can be collected and input whether or not the device has an Internet connection. It syncs as soon as the device has a cell or wifi connection.

Features & Benefits

- ▶ Single online system for keeping track of all historical and current chemical application activities.
- ▶ Mobile app can be used in the field with or without internet connectivity
- ▶ Planning, tracking and managing of chemical management activities
- ▶ GIS-based tools for defining application areas
- ▶ Manage active ingredients and costs
- ▶ Capture field observation and application progress with mobile component
- ▶ Expose relevant information to external and internal stakeholders from a web-portal
- ▶ Maintains and provides access to licenses and regulatory paperwork
- ▶ Provides mechanisms for public notifications and comment periods

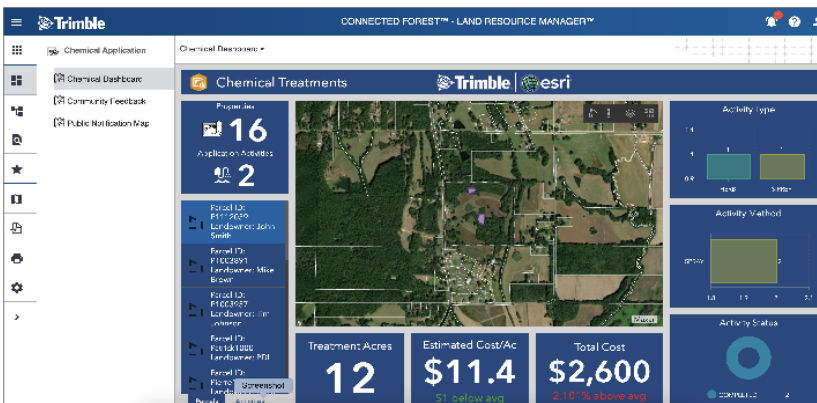
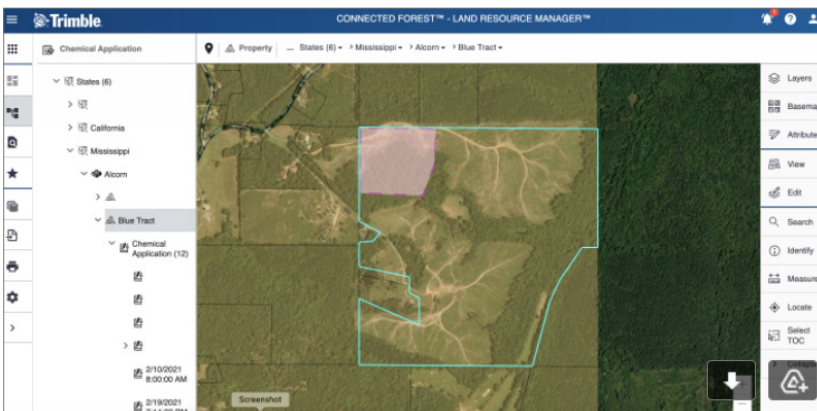
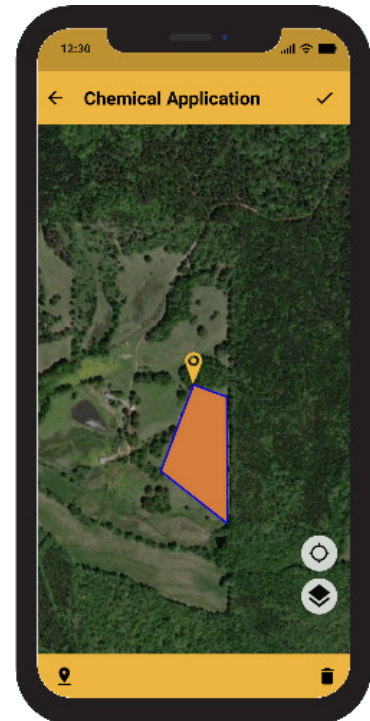


CFForest CHEMICAL APPLICATION MANAGER



WEB-BASED MAP INTERFACE

CAM includes a web-based map interface to share information and provide transparency for stakeholders, from regulatory agencies to neighboring landowners. The mapping interface is used as part of record-keeping requirements, public notifications, comment periods, approval processes, re-entry interval-related issues and more.



Contact Us

Visit forestry.trimble.com/solutions/cfforest/ to learn more or to purchase a CAM subscription.



CANADA
Suite 560,
1188 West Georgia Street
Vancouver BC, V6E 4A2
+ 1 888 443 4241 phone

USA
4100 SW Research Way
Corvallis, OR 97333
+ 1 541 752 9000 phone

FINLAND
Revontulentie 8 C
02100 Espoo
+ 358 20 742 0600 phone

NEW ZEALAND
1372 Hinemoa Street
Rotorua, 3010
+ 64 7 348 0308 phone

BRAZIL
Av. Dr. João Guilhermino, 261
Sala 152 – Centro
Cep: 12210-131.
São José dos Campos
São Paulo
+ 55 12 4009 2609 phone

GERMANY
Chorherrengasse 3
D-88364 Wolfegg
+49 7527 9150 phone

forestrysales@trimble.com

forestry.trimble.com