



# Mobile Builder

## SIMPLIFY THE PAPER TRAIL

### Reduce your field data collection costs

Tired of spending hours finding lost tickets, driving to every Forestry site to collect paper forms, entering hand-written data that's hard to read into spreadsheets, waiting for weeks to reconcile loads? Welcome to Mobile Builder - Trimble Forestry's platform that builds custom mobile apps for iOS and Android mobile devices.

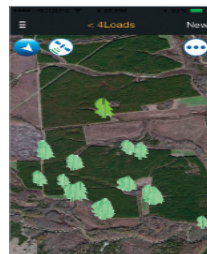
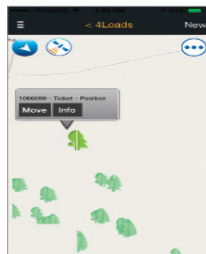
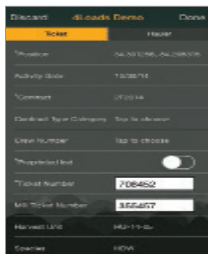
Mobile Builder allows forestry clients to mobilize spatial and tabular business processes enabling field workers to quickly and effectively capture vital field data. Portable field collection applications can be easily created to closely match any business process. Mobile Builder validates the field data before it gets uploaded and automates the data exchange process.

Mobile Builder consists of the Mobile Server and a Mobile Client. The Server synchronizes field data with the Mobile Client applications built using Mobile Builder. Administrators can quickly configure mobile forms for any type of business process that is better managed on the go and rapidly deploy to the user community. Once a form is configured, it can be deployed to both iOS and Android devices.

Mobile Builder can also integrate business processes directly with Trimble Forestry's Land Resource Management (LRM) enterprise solution for improved accuracy and data validation.

### Key Features

- ▶ Configure a form once, deploy it to both iOS and Android devices
- ▶ Downloadable app from both AppStore and Playstore.
- ▶ Integrates with Enterprise system
- ▶ Manage app changes, pick-lists and security centrally
- ▶ Works online or offline
- ▶ Captures GPS locations
- ▶ Configurable form attributes including spatial (point, line, polygon), pick-lists, autonumbering, text, numbers, photos, signatures, barcodes and many more
- ▶ Map features
- ▶ Link photos to records
- ▶ Data synchronization back to server or enterprise

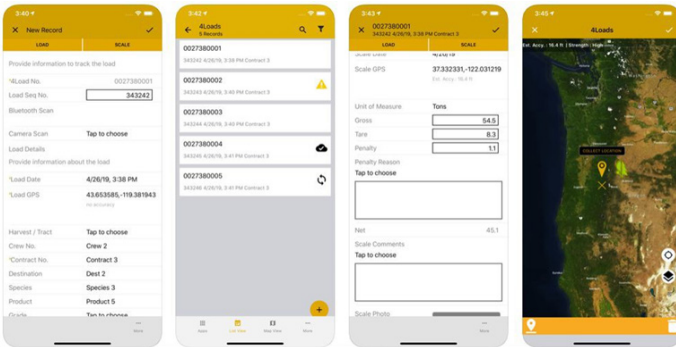


## Mobile Integration

The flexibility of Mobile Builder ensures the applications match the exact requirements of the tasks at hand. Whether the requirement is a simple field inspection, survey, or audit, the mobile applications are configured to simplify the recording of various types of field data. Mobile Builder is ideal for tracking information which will enter the accounting system or results in payments or the capture of images, sketches and signatures needed to describe or validate a transaction.

## Mobile Flexibility

Mobile Builder supports the most commonly used mobile platforms including Apple's iOS and Google's Android, enabling field users to effectively use Mobile Builder as the solution for their data collection needs. This allows clients to select the handheld device most suitable for their application whether it is an inexpensive smartphone for inspection applications or a ruggedized mobile device designed for more demanding environments.



## SMARTPHONE SOLUTIONS

- ▶ Load tracking
- ▶ Pre and post harvest inspection
- ▶ Job tracking
- ▶ Harvesting compliance
- ▶ Planting Assessment

## The Benefits

- ▶ Reduced collection time: data is available to view online as soon as field user connects to cell or wifi and synchronizes
- ▶ Reduced data corrections: data is more accurate due to centrally managed pick-lists, formats
- ▶ Reduced data entry: No manual entry of data into spreadsheets, other systems from paper forms.
- ▶ Timely reconciliations: Don't have to wait on load tickets to be turned in to reconcile. All the data is online!
- ▶ Timely changes & updates: Changes to app and forms are deployed centrally. A user just needs to sync to get the changes.
- ▶ Standardized forms and fields improve data quality
- ▶ Improved Timber Security; record GPS location of load and follow your timber through the supply chain to the mill



### CANADA

Suite 560,  
1188 West Georgia Street  
Vancouver BC, V6E 4A2  
+ 1888 443 4241 phone

### USA

4100 SW Research Way  
Corvallis, OR 97333  
+ 1 541 752 9000 phone

### FINLAND

Revontulentie 8 C  
02100 Espoo  
+ 358 20 742 0600 phone

### NEW ZEALAND

1372 Hinemoa Street  
Rotorua, 3010  
+ 64 7 348 0308 phone

### BRAZIL

Av. Dr. João Guilhermino, 261 Sala  
152 – Centro  
Cep: 12210-131.  
São José dos Campos  
São Paulo  
+ 55 12 4009 2609 phone

### GERMANY

Chorherrngasse 3  
D-88364 Wolfegg  
+49 7527 9150 phone

forestrysales@trimble.com forestry.trimble.com

© 2020, Trimble Inc. All rights reserved. Trimble, and the Globe & Triangle logo are trademarks of Trimble Inc., registered in the United States and in other countries. All other brand names and trademarks are property of their owners. PN 022518-020 (05/18)